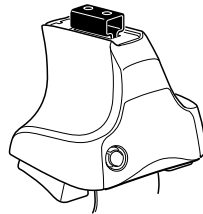
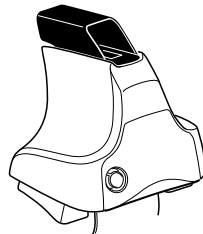
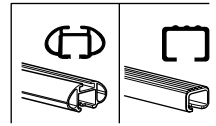


Kit 1665

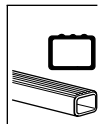
FORD Ranger, 4-dr Double Cab, 11-



754 Rapid System
480R Rapid Traverse (North America)



480 Traverse (North America)



Max.
75 kg
Max.
165 lbs

x1

x4

x4

x4

x4

x1

x4

x4

754 Rapid System
480R Rapid Traverse (North America)

480 Traverse (North America)

x2

x2
 23 mm

x2
 23 mm

x2
 23 mm

x2
 23 mm

x4

x4

x1
 17 mm

x2
 23 mm

x2
 23 mm

x2

x2

x2

x2

x2

x2

x2

(North America)

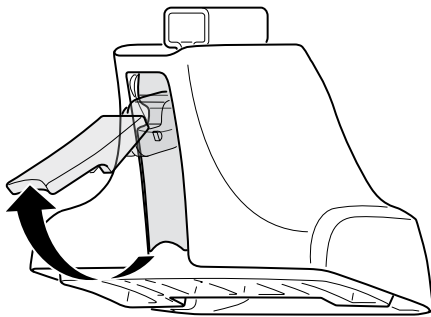
1213 **x4**

171 **x2**

385 **x2**

x1

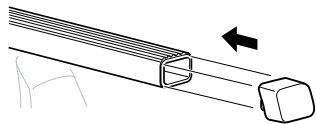
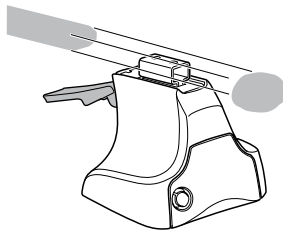
1



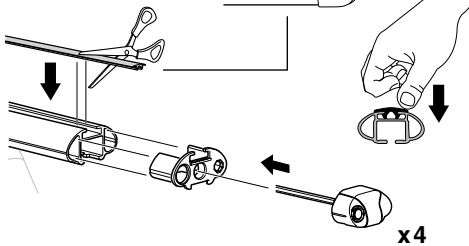
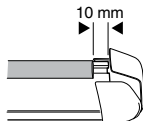
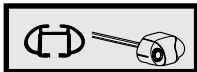
2



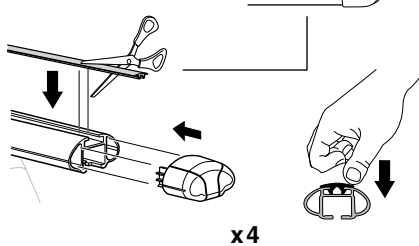
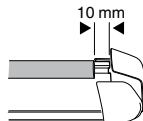
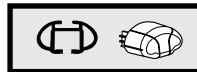
754 Rapid System
480R Rapid Traverse
(North America)



x4



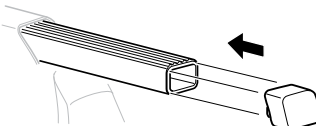
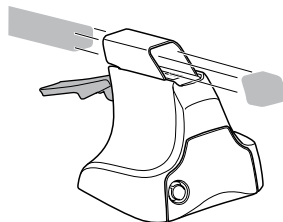
x4



x4



480 Traverse
(North America)

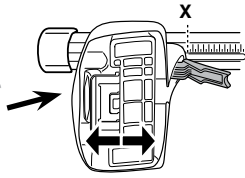


x4

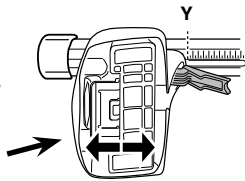
3



754 Rapid System



	X
FORD Ranger, 4-dr Double Cab, 11-	45,5



	Y
FORD Ranger, 4-dr Double Cab, 11-	44

3

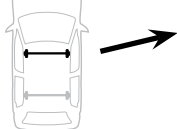


480R Rapid Traverse

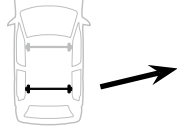


480 Traverse

(North America)

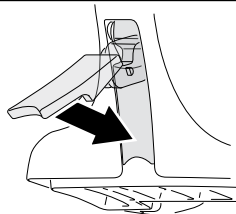


	X inch	X mm
FORD Ranger, 4-dr Double Cab, 11-	43 1/2"	1106 mm



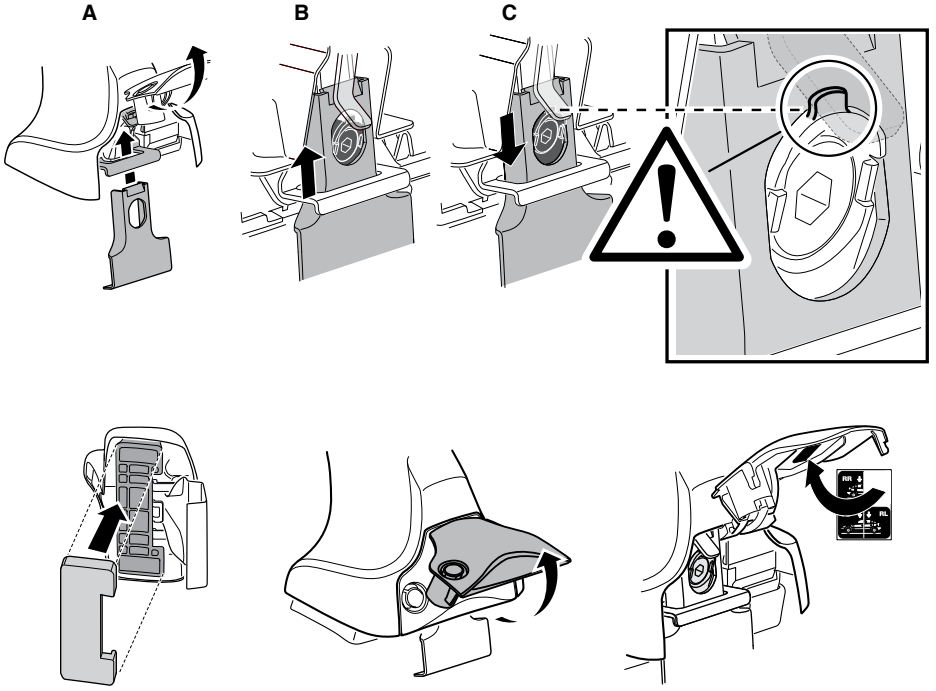
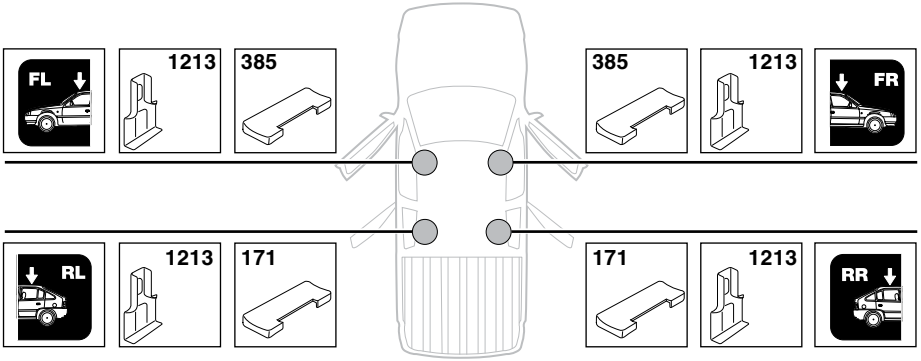
	Y inch	Y mm
FORD Ranger, 4-dr Double Cab, 11-	43"	1091 mm

4

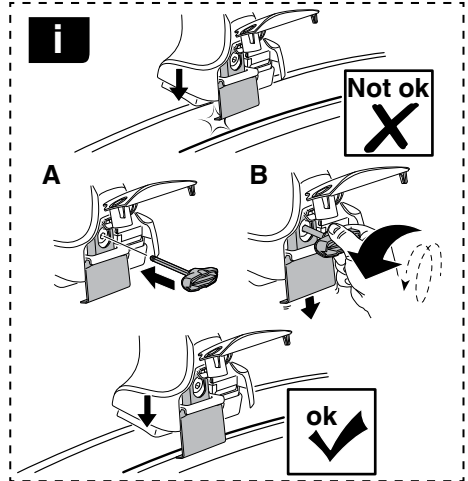
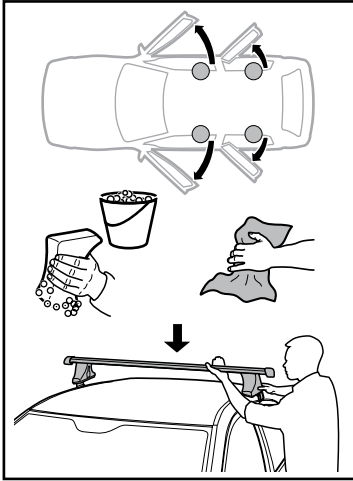


5

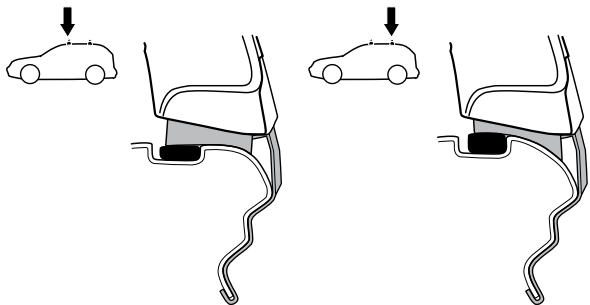
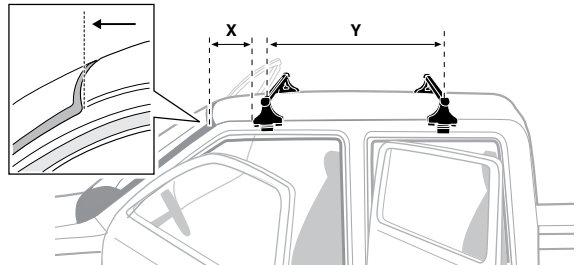
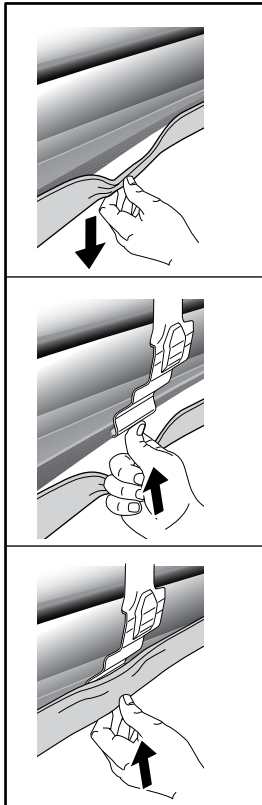
FORD Ranger, 4-dr Double Cab, 11-



6



	X mm	Y mm	X inch	Y inch
FORD Ranger, 4-dr Double Cab, 11-	235 mm	700 mm	9 1/4"	27 1/2"



7



GB/US Tighten alternately
 D Die Schrauben abwechselnd anziehen
 F Serrer alternativement chaque côté
 NL Afwisselend aan de linker- en de rechterkant aandraaien
 I Alternare il serraggio delle viti
 E Apertar alternativamente
 PT Aperte alternadamente
 S Dra åt växelvis
 FIN Kierrä vuorotellen
 EST Pinguldage vaheldumisi
 LAT Pieļieciet pamišus
 LIT Užsukinėkite pakaitomis
 PL Śruby dokręcaj naprzemiennie
 RU Затягивайте попеременно

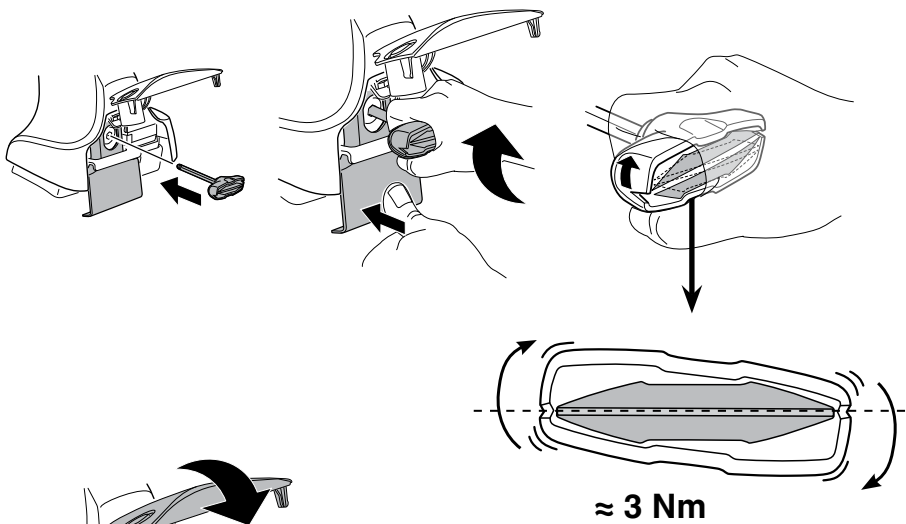
CZ Pokręťta bagażnika dokręcaj naprzemiennie.
 SK Dofahajte striedavo
 SLO Privijajte izmenično.
 HR Naizmjenično zategnite
 HU Egymástól függetlenül szorítandó
 GR Σφιγίγτες εναλλάξ
 TR Dönüşümlü sıkın

中文 交替拧紧

한국어 번갈아 가며 조이십시오.

日本語 交互に締め付けてください。

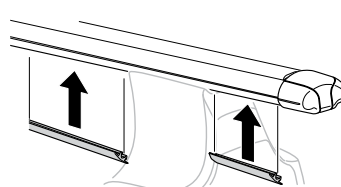
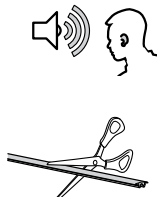
ไทย ชันในแบบสลับ

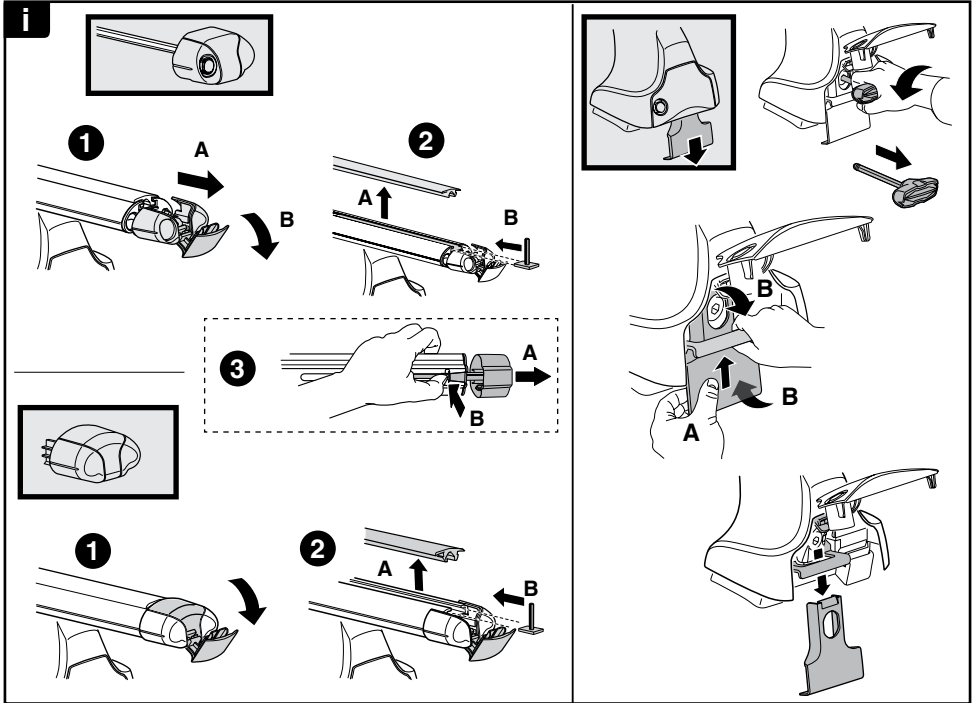


8

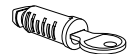
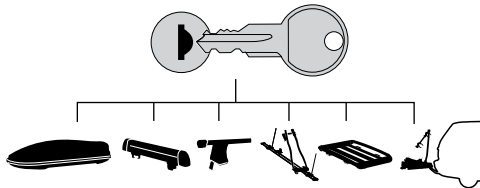


x1
17 mm





THULE
SWEDEN
**ONE
KEY
SYSTEM**



544 (x4)

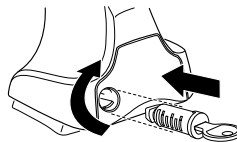
596 (x6)

588 (x8)

NA **510** (x10)

EUR **452** (x12)

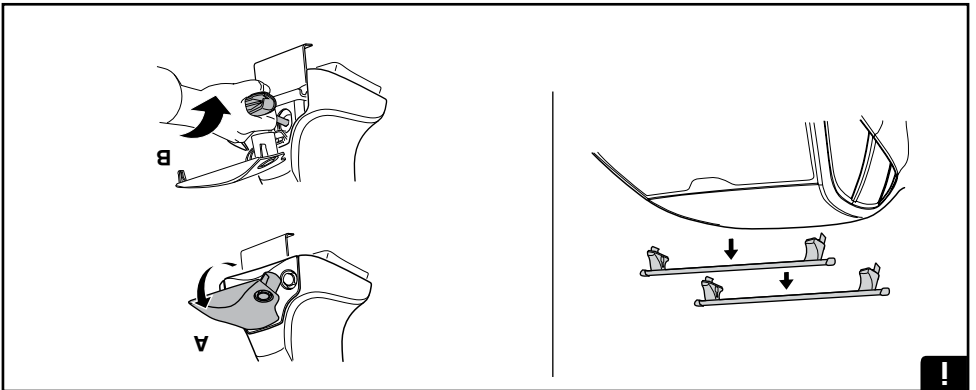
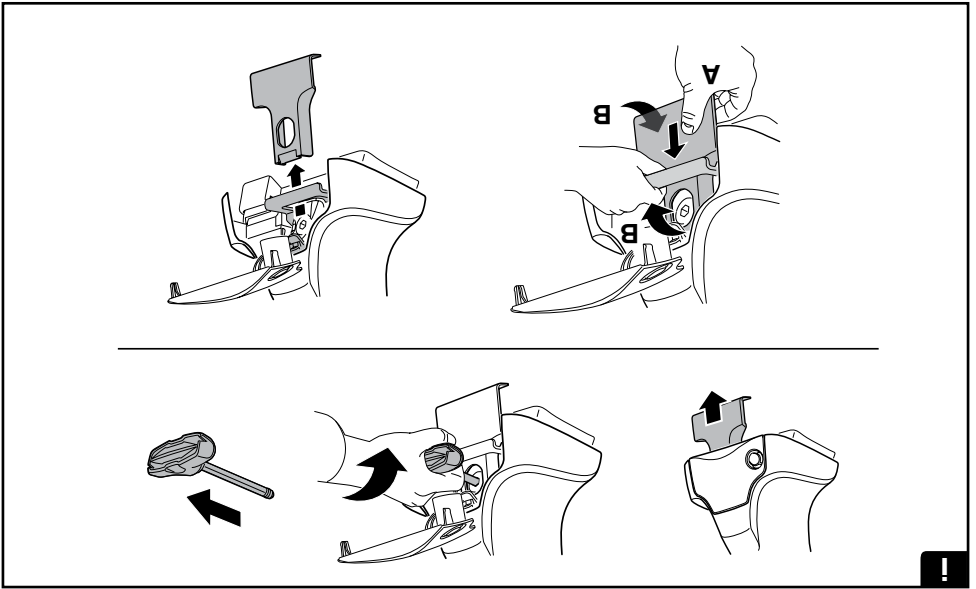
ASIA

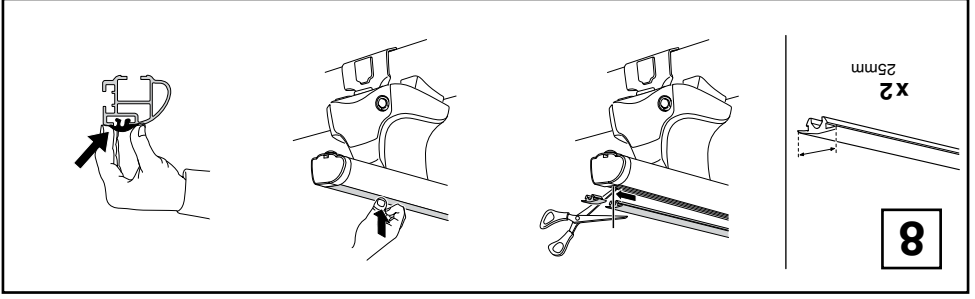


WW ▶ Thule Sweden AB, Box 69, 330 33 Hillerstorp, SWEDEN
NA ▶ Thule Inc., 42 Silvermine Road, Seymour, Connecticut 06483, USA

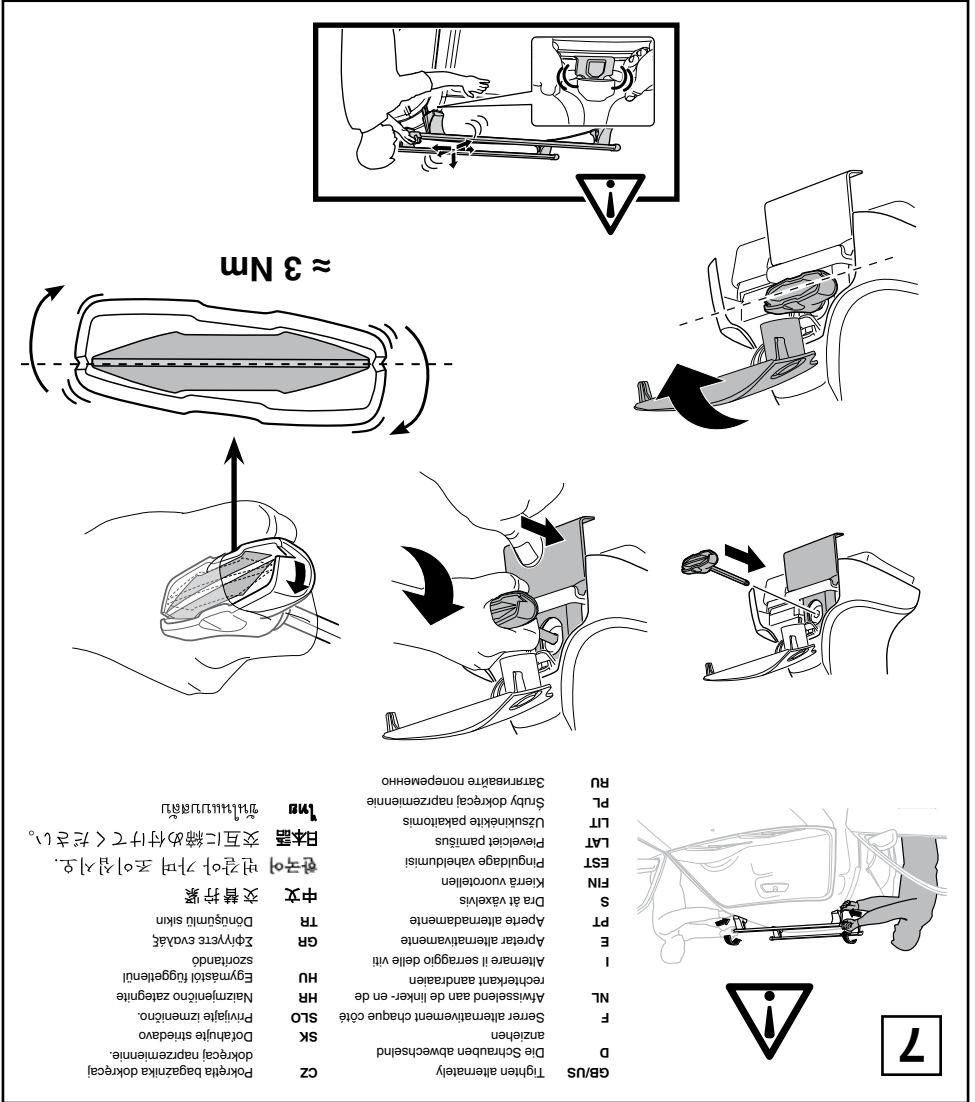
info@thule.com
customer.service@thule.com

www.thule.com





8



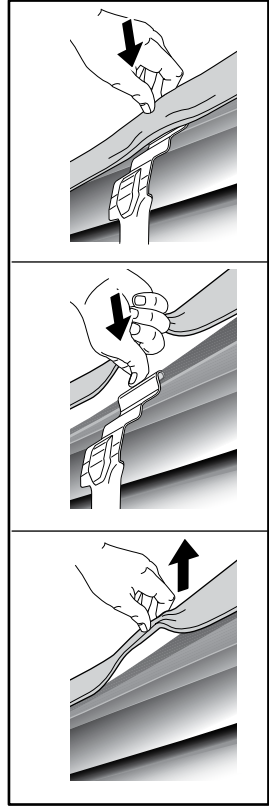
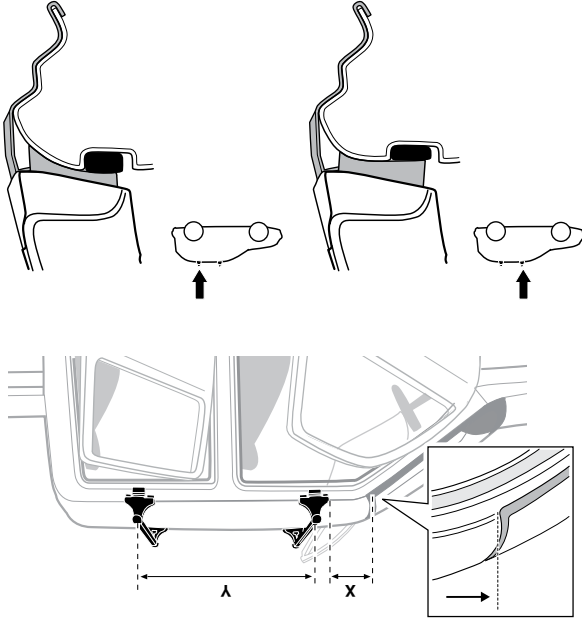
7

GB/US Tighen alternately
 D Die Schrauben abwechselnd
 F Serrer alternativement chaque côté
 NL Afwisselend aan de linker- en de
 I rechterkant aandraaien
 E Alternare il serraggio delle viti
 PT Aperte alternadamente
 S Dra åt växelvis
 FIN Kierrä vuorotellen
 EST Pinguldage vaheldumisi
 LAT Pevicīet pārtīvis
 LIT Užsukinėkite pakaitomis
 PL Słubly dokrecaj naprzemiennie
 RU Затягивайте попеременно

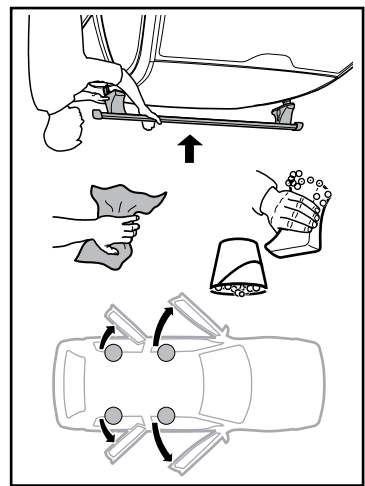
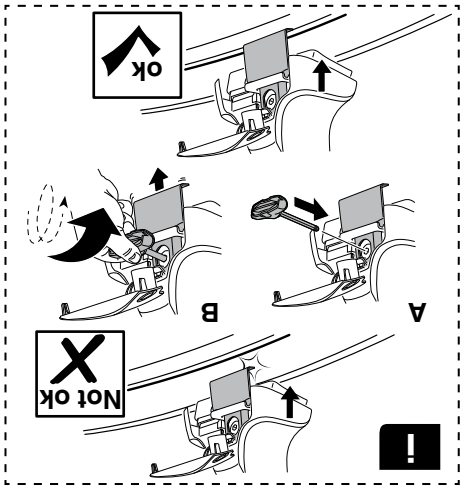
CZ Pokrétla bagazníka dokrecaj dokrecaj naprzemiennie.
 SK Dotiahnuť striedavo.
 SLO Privajite izmenično.
 HR Najzamenično zategnite.
 HU Egymástól fűggetlenül szorítandó.
 GR Ζφίτυρε εναλλάξ.
 TR Dönüşümlü sıkın.
 HU 交替拧紧

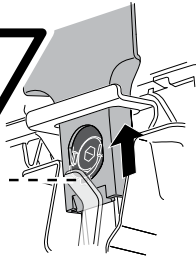
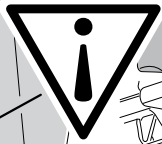
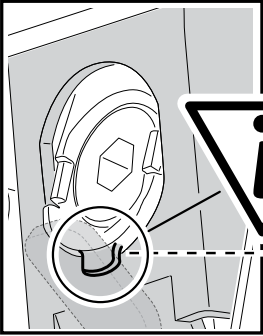
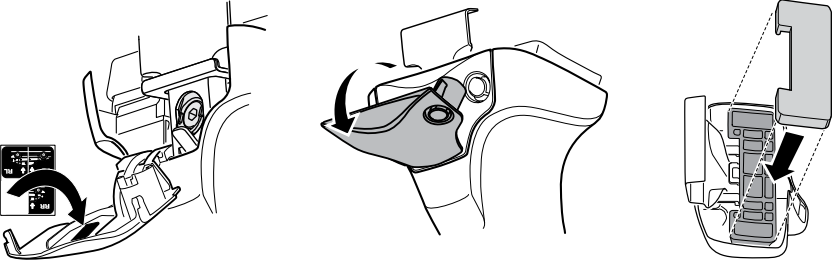
한국어 변갈아 가며 조이십시오.
 日本語 交互に締め付けてください。

1m 3mm ≈

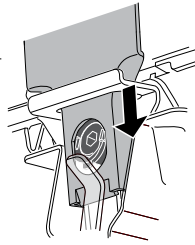


27 1/2"	9 1/4"	700 mm	235 mm	FORD Ranger, 4-dr Double Cab, 11-
Y inch	X inch	Y mm	X mm	

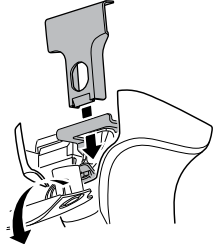




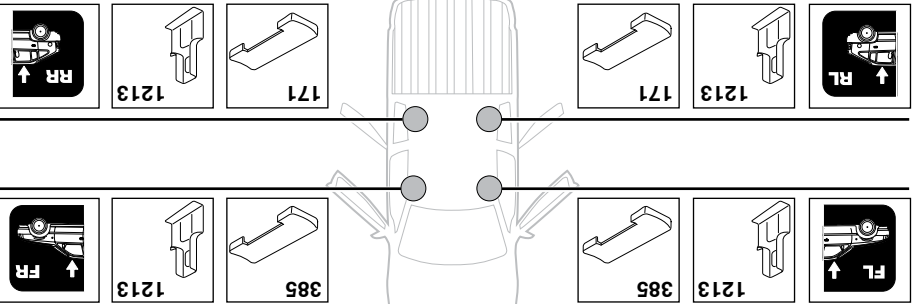
A

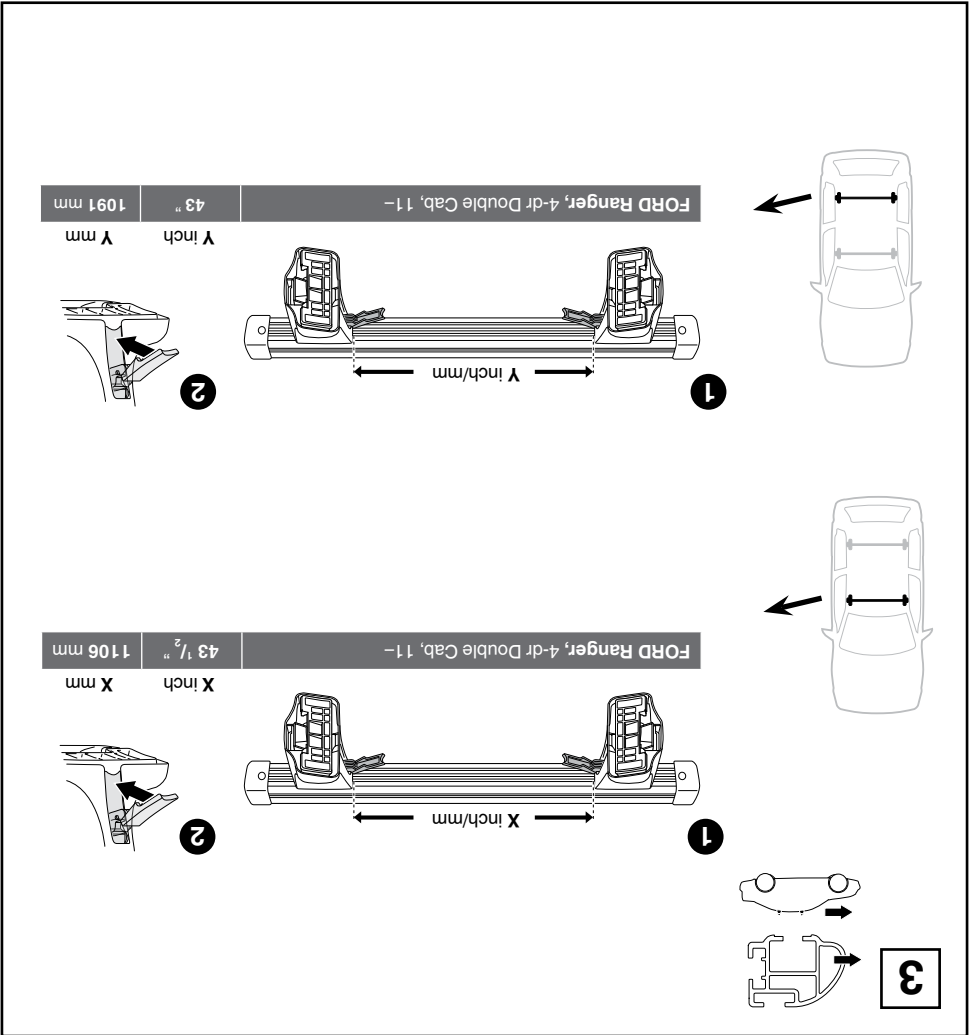
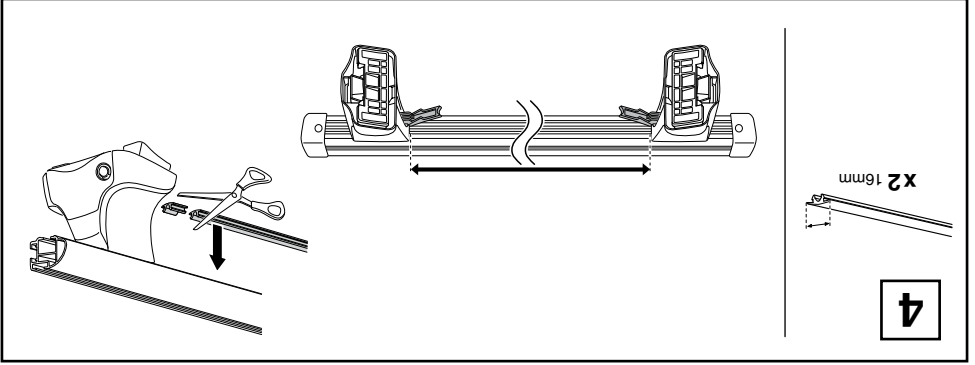


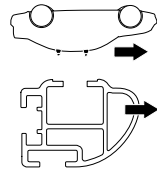
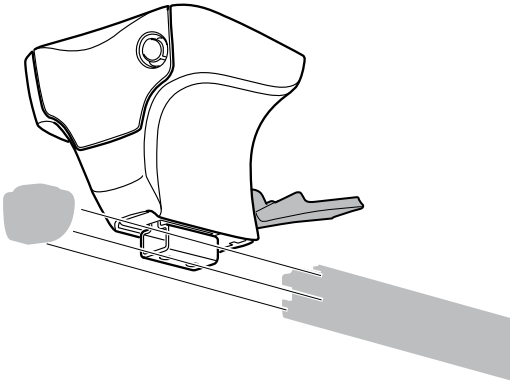
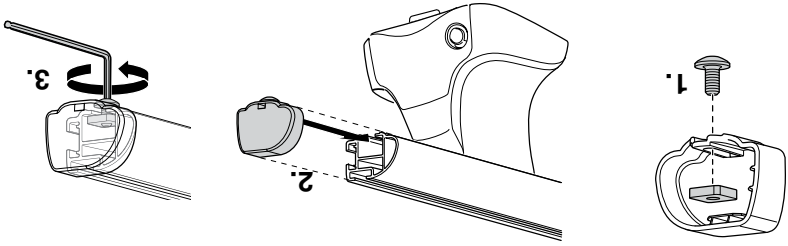
B



C

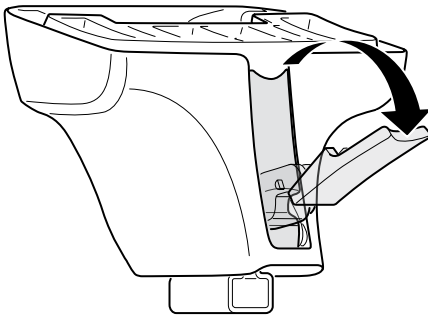




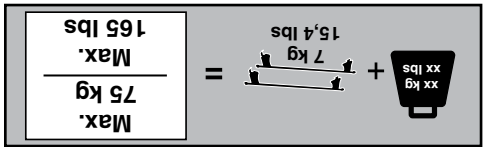
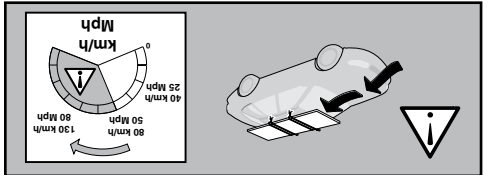
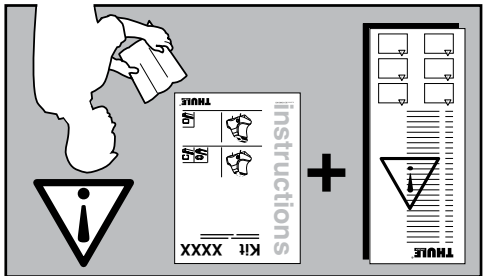
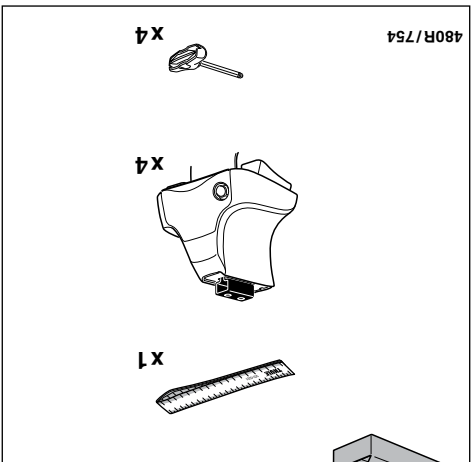
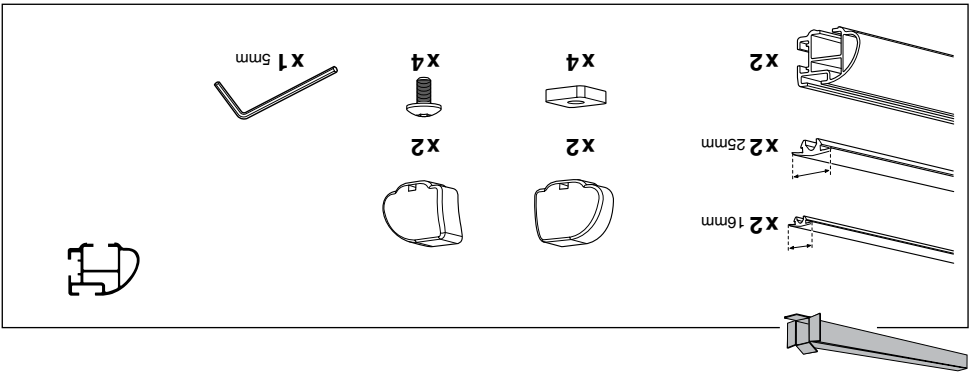
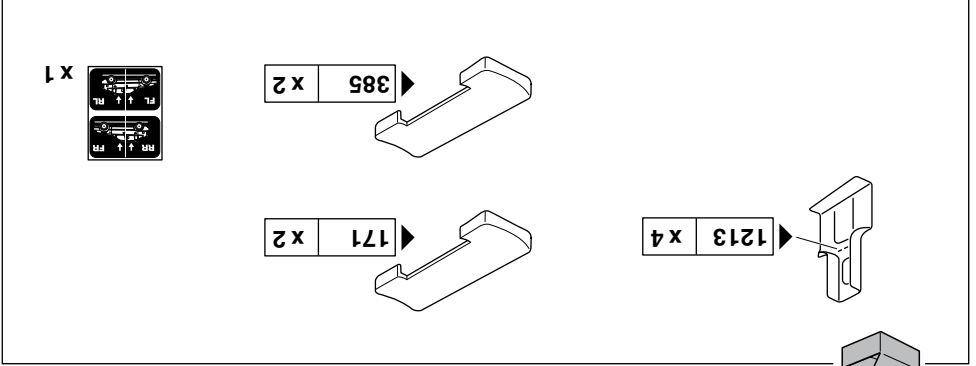


- x1 5mm Allen key
- x4 screws
- x4 spacers
- x2 top covers
- x2 bottom covers

2



1

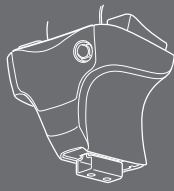


instructions

Kit 1665

FORD Ranger, 4-dr Double Cab, 11-

480R
754



ISO 11154-E

THULE
SWEDEN
PROFESSIONAL