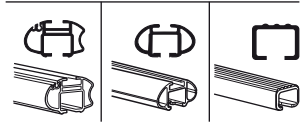
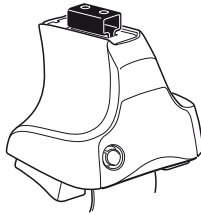


Kit 1240

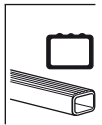
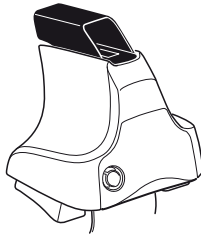
KIA Magentis, 4-dr Sedan, 01-02, 03-05

KIA Optima, 4-dr Sedan, 01-02, 03-05

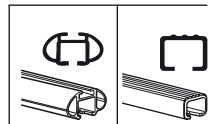
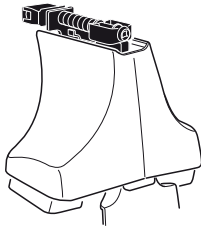
480R
754



480

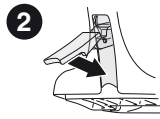
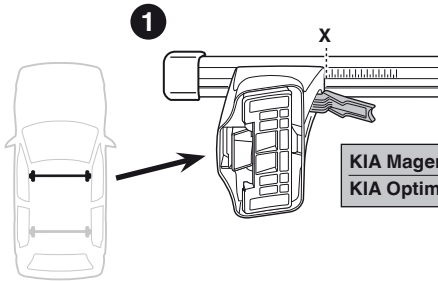


750

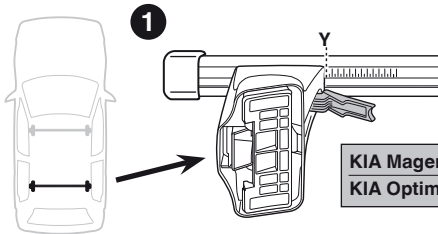


Kit

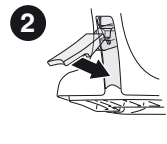
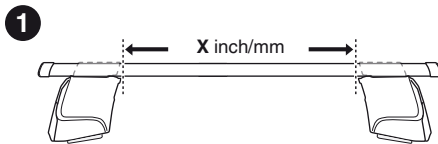
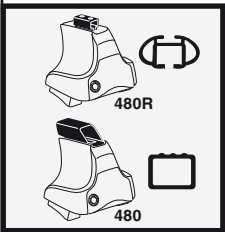




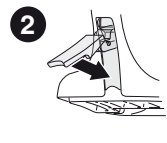
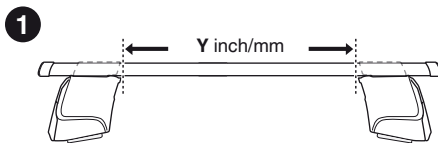
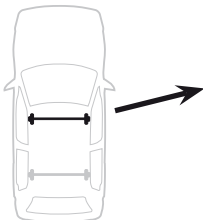
	X
KIA Magentis, 4-dr Sedan, 01-02, 03-05	37
KIA Optima, 4-dr Sedan, 01-02, 03-05	37



	Y
KIA Magentis, 4-dr Sedan, 01-02, 03-05	36
KIA Optima, 4-dr Sedan, 01-02, 03-05	36



	X inch	X mm
KIA Magentis, 4-dr Sedan, 01-02, 03-05	40 1/4"	1021 mm
KIA Optima, 4-dr Sedan, 01-02, 03-05	40 1/4"	1021 mm

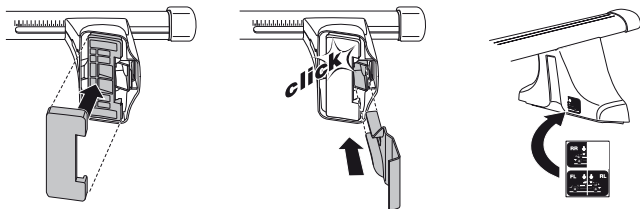
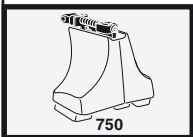
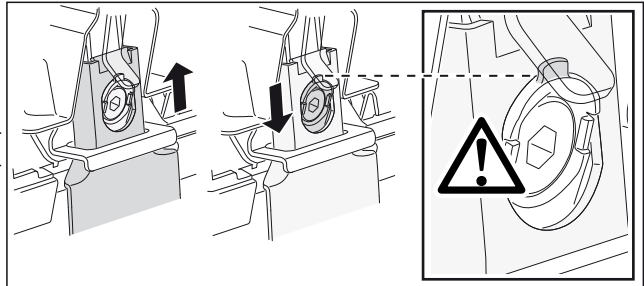
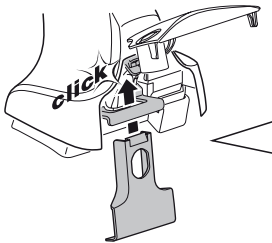
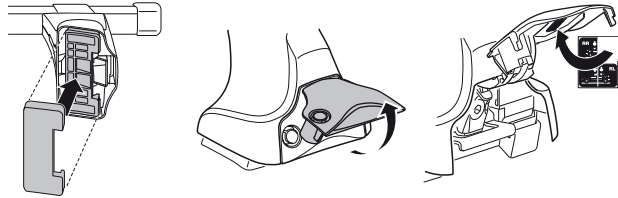
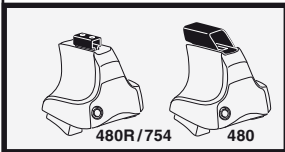
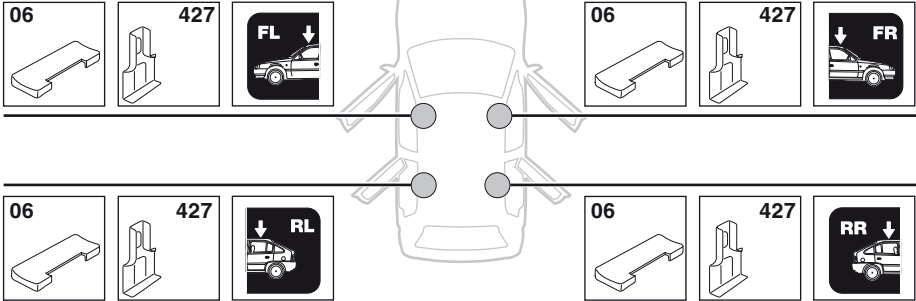


	Y inch	Y mm
KIA Magentis, 4-dr Sedan, 01-02, 03-05	39 3/4"	1011 mm
KIA Optima, 4-dr Sedan, 01-02, 03-05	39 3/4"	1011 mm

4

KIA Magentis, 4-dr Sedan, 01-02, 03-05

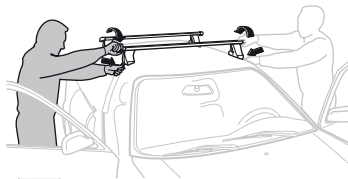
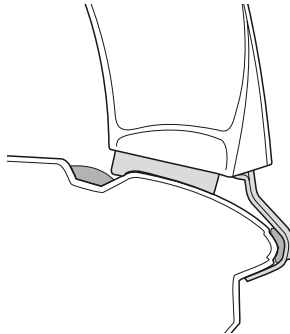
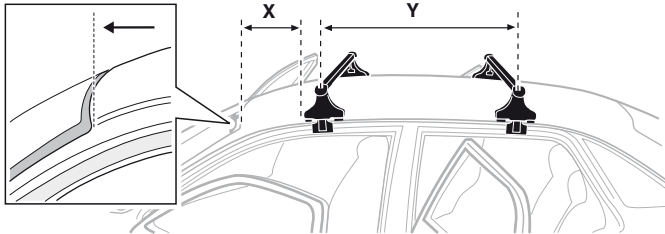
KIA Optima, 4-dr Sedan, 01-02, 03-05



5



	X mm	Y mm	X inch	Y inch
KIA Magentis, 4-dr Sedan, 01-02, 03-05	250 mm	650 mm	9 7/8"	25 5/8"
KIA Optima, 4-dr Sedan, 01-02, 03-05	250 mm	650 mm	9 7/8"	25 5/8"



GB/US Tighten alternately

D Die Schrauben abwechselnd anziehen

F Serrer alternativement chaque côté

NL Afwisselend aan de linker- en de rechterkant aandraaien

I Alternare il serraggio delle viti

E Apretar alternativamente

PT Aperte alternadamente

S Dra åt växelvís

FIN Kierrä vuorotellen

EST Pinguldage vaheldumisi

LAT Pielieciet pamāšus

LIT Užsukinėkite pakaitomis

PL Śruby dokręcaj naprzemiennie

RU Затягивайте попеременно

CZ Pokręťta bagażníka dokręcaj dokręcaj naprzemiennie.

SK Doťahujte striedavo

SLO Privijajte izmenično.

HR Naizmjenično zategnite

HU Egymástól függetlenül szorítandó

GR Σφίγγετε εναλλάξ

TR Dönüşümlü sıkın

中文 交替拧紧

한국어 번갈아 가며 조이십시오.

日本語 交互に締め付けてください。

ไทย ชั้้นโน้แบบสลับ

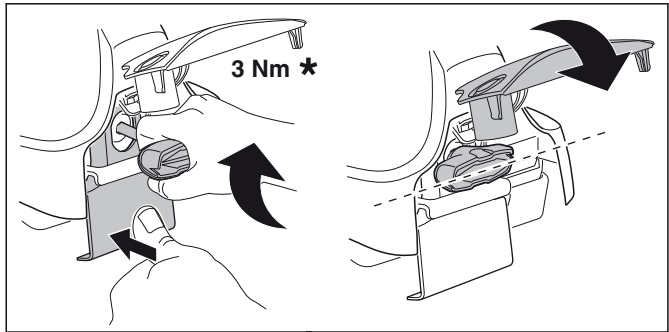
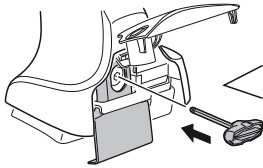
6



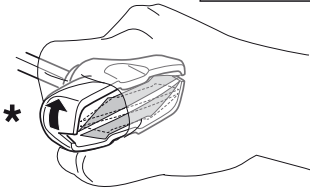
480R/754



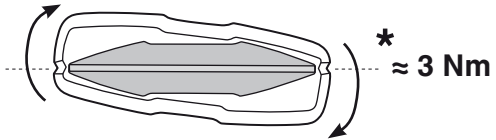
480



3 Nm *



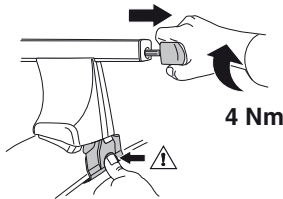
*



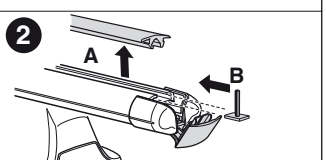
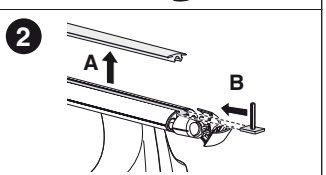
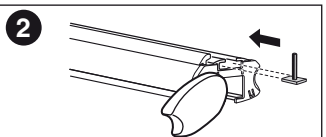
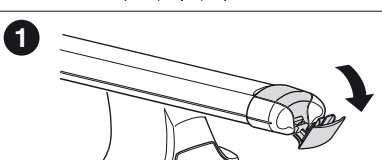
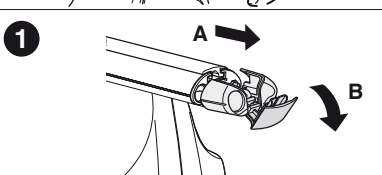
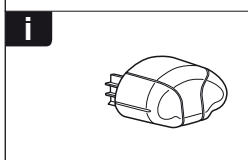
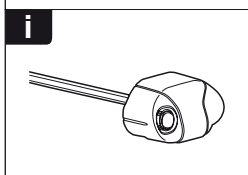
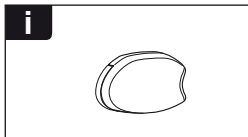
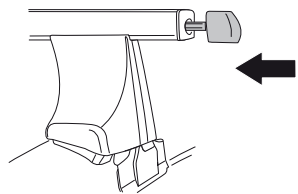
* ≈ 3 Nm



750



4 Nm





THULE
SWEDEN
**ONE
KEY
SYSTEM**



- 544 (x4)
- 596 (x6)
- 588 (x8)
- NA 510 (x10)
- EUR 452 (x12)
- ASIA 452 (x12)



WW ▶ Thule Sweden AB, Box 69, 330 33 Hillerstorp, SWEDEN
NA ▶ Thule Inc., 42 Silvermine Road, Seymour, Connecticut 06483, USA

info@thule.com
customer.service@thule.com

www.thule.com