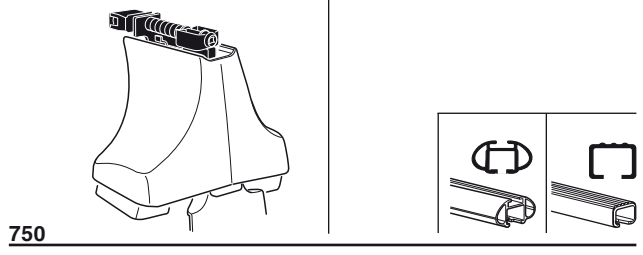
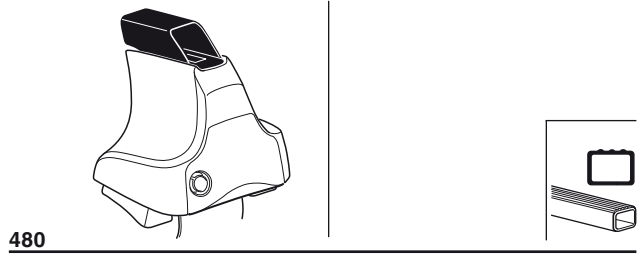
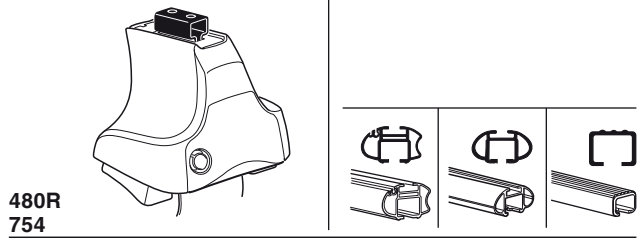
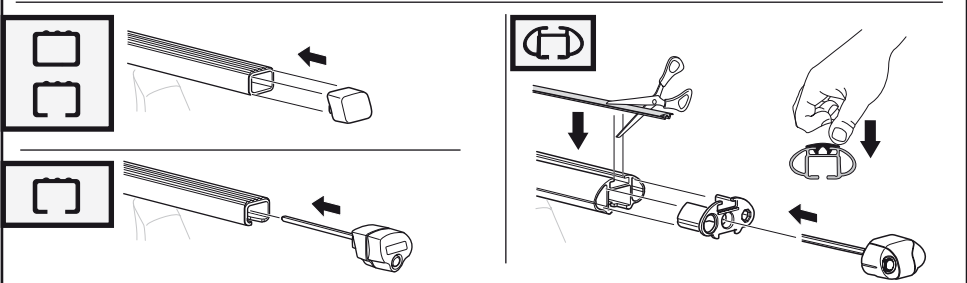
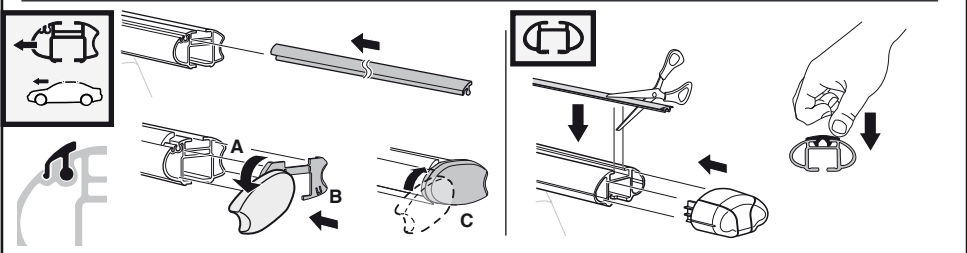
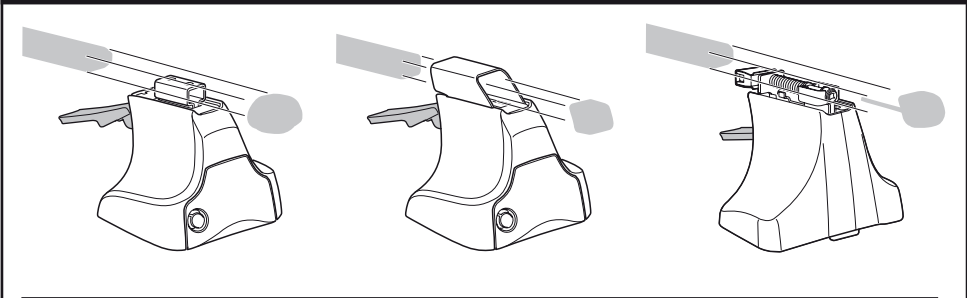
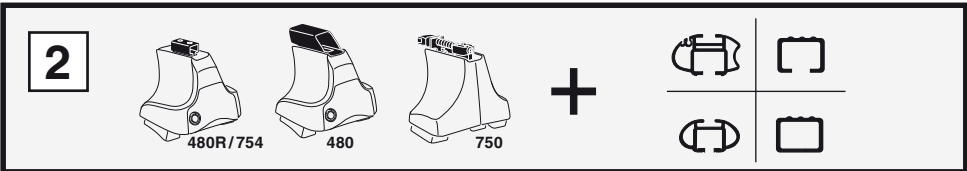
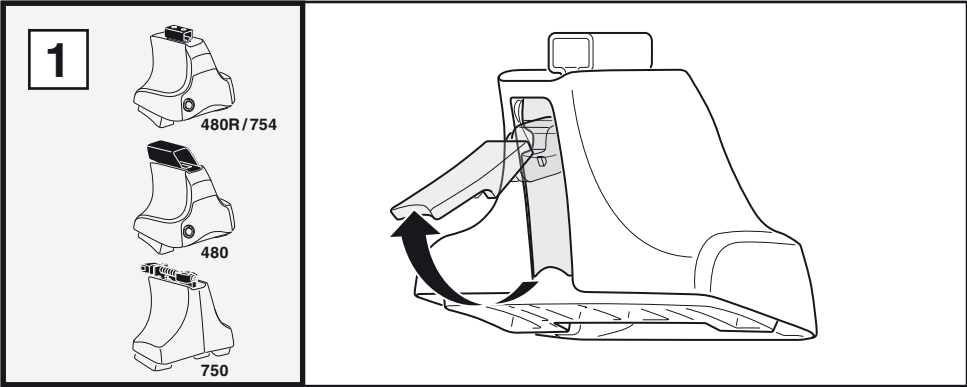


Kit 1165

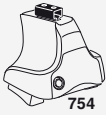
TOYOTA Estima, 5-dr MPV, 00-02, 03-
TOYOTA Previa, 5-dr MPV, 00-02, 03-



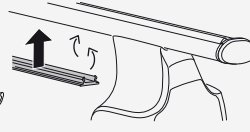
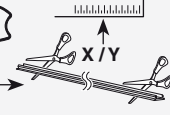
Kit



3

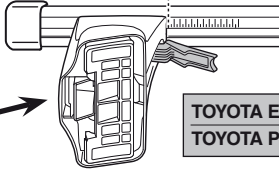
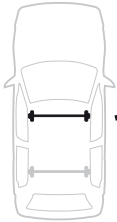


754

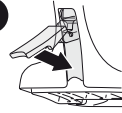


750

1

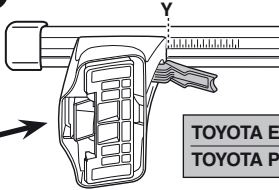


2

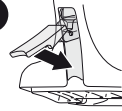


	X
TOYOTA Estima, 5-dr MPV, 00-02, 03-	34
TOYOTA Previa, 5-dr MPV, 00-02, 03-	34

1



2



	Y
TOYOTA Estima, 5-dr MPV, 00-02, 03-	31
TOYOTA Previa, 5-dr MPV, 00-02, 03-	31

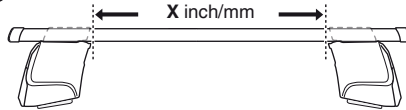


480R

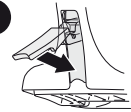


480

1

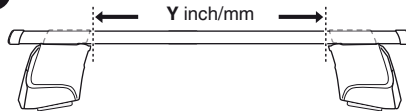


2

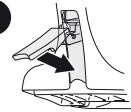


	X inch	X mm
TOYOTA Estima, 5-dr MPV, 00-02, 03-	39"	991 mm
TOYOTA Previa, 5-dr MPV, 00-02, 03-	39"	991 mm

1

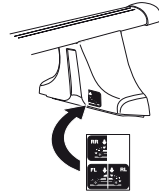
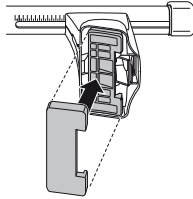
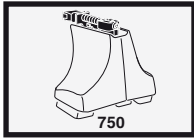
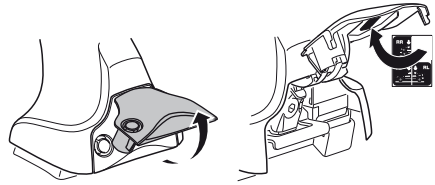
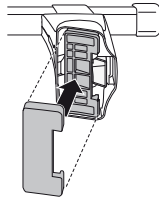
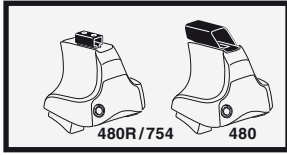


2

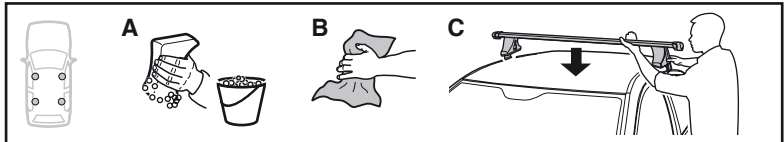


	Y inch	Y mm
TOYOTA Estima, 5-dr MPV, 00-02, 03-	37 ⁷ / ₈ "	961 mm
TOYOTA Previa, 5-dr MPV, 00-02, 03-	37 ⁷ / ₈ "	961 mm

4



5



283 x 4



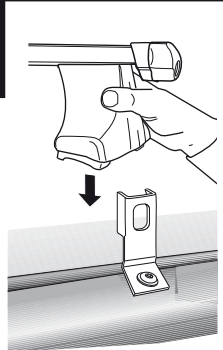
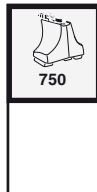
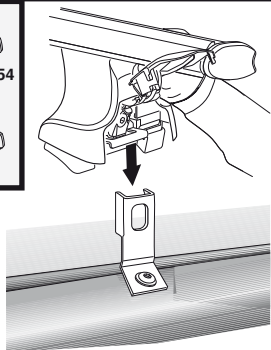
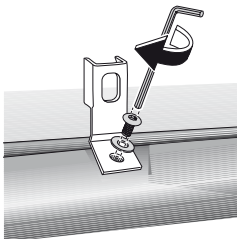
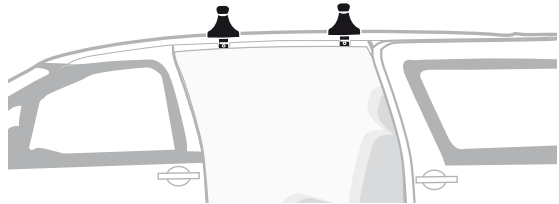
x 4



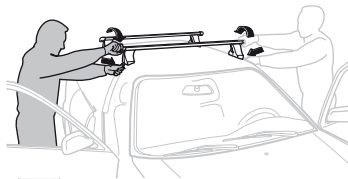
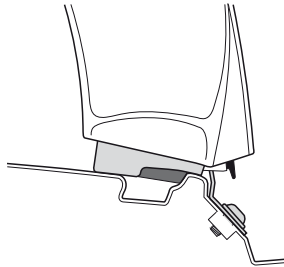
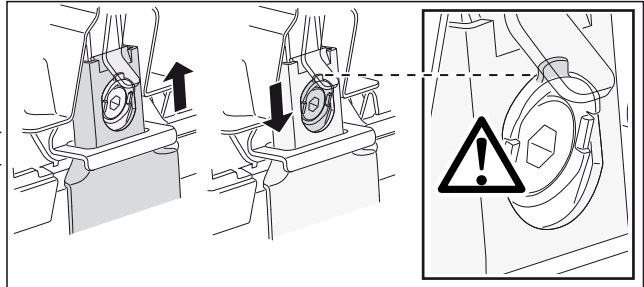
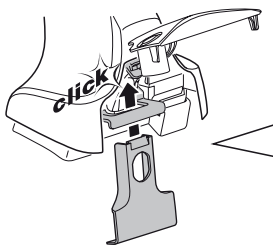
x 1



x 4



6



GB/US Tighten alternately

D Die Schrauben abwechselnd anziehen

F Serrer alternativement chaque côté

NL Afwisselend aan de linker- en de rechterkant aandraaien

I Alternare il serraggio delle viti

E Apretar alternativamente

PT Aperte alternadamente

S Dra åt växelvis

FIN Kierrä vuorotellen

EST Pinguldage vaheldumisi

LAT Pielvelciet pamīšus

LIT Užsukinėkite pakaitomis

PL Śruby dokręcaj naprzemiennie

RU Затягивайте попеременно

CZ Pokręťta багаžníka dokręcaj dokręcaj naprzemiennie.

SK Doťahujte striedavo

SLO Privijajte izmenično.

HR Naizmjenično zategnite

HU Egymástól függetlenül szorítandó

GR Σφίγγετε εναλλάξ

TR Dönüşümlü sıkın

中文 交替拧紧

한국어 번갈아 가며 조이십시오.

日本語 交互に締め付けてください。

ไทย ชั้้นในแบบสลับ

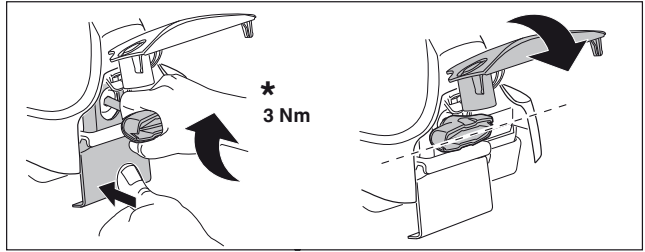
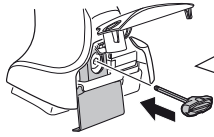
6



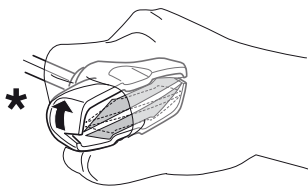
480R/754



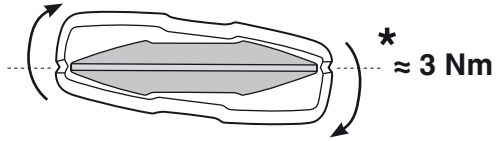
480



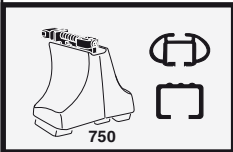
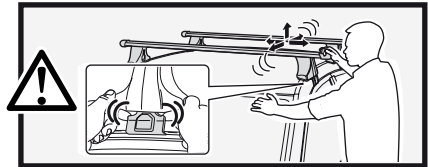
*
3 Nm



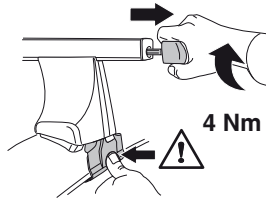
*



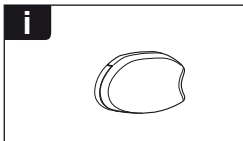
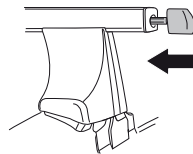
*
≈ 3 Nm



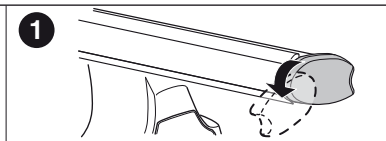
750



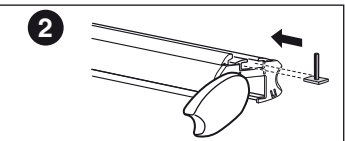
4 Nm



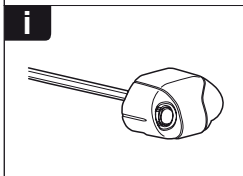
i



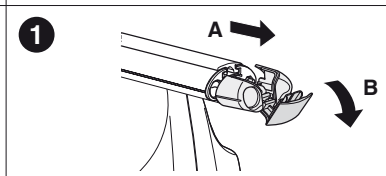
1



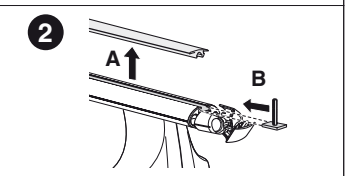
2



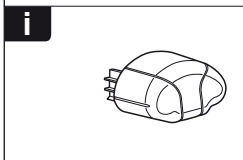
i



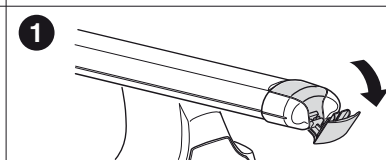
1



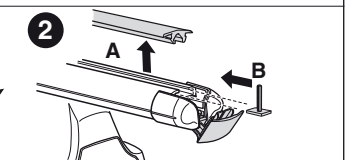
2



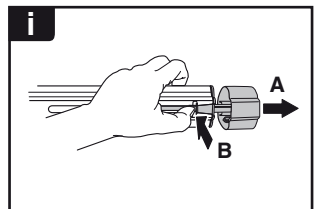
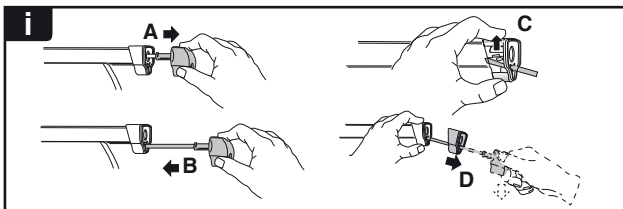
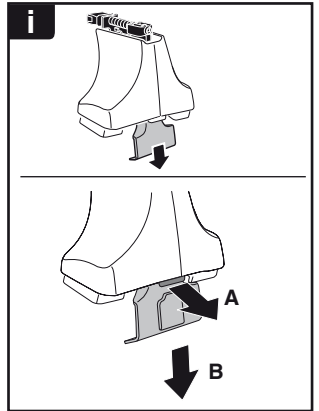
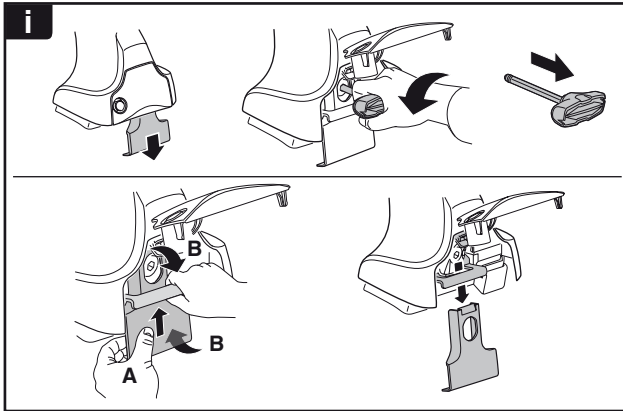
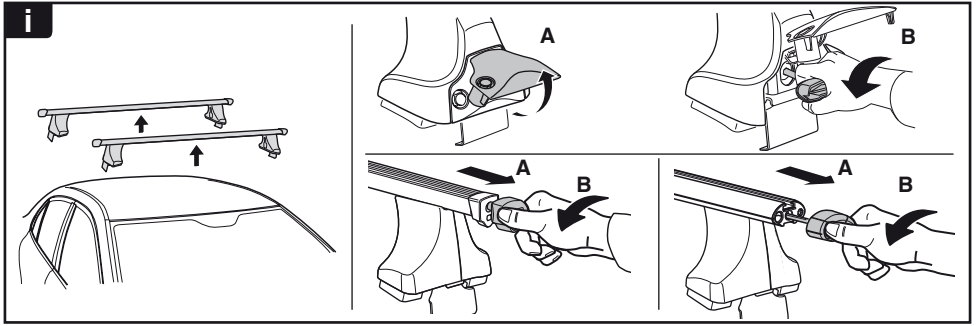
i



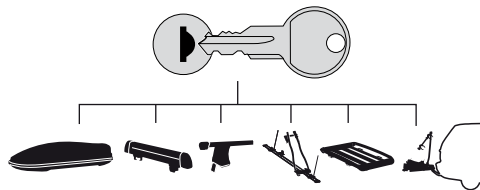
1



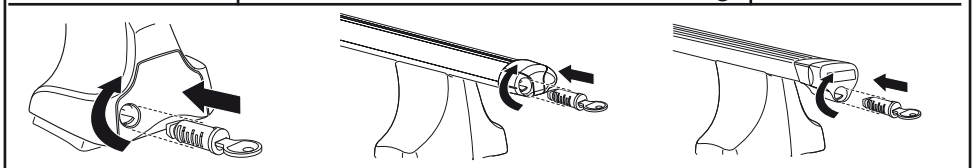
2



THULE
SWEDEN
**ONE
KEY
SYSTEM**



- 544 (x4)
- 596 (x6)
- 588 (x8)
- NA 510 (x10)
- EUR 452 (x12)
- ASIA



WW ▶ Thule Sweden AB, Box 69, 330 33 Hillerstorp, SWEDEN
NA ▶ Thule Inc., 42 Silvermine Road, Seymour, Connecticut 06483, USA

info@thule.com
customer.service@thule.com

www.thule.com